

The mixed public-private model for the take of ASSIST model



Anna Wierzchołowska-Dziedzic
awierzcholowska@kape.gov.pl



Problems and solutions

- The biggest problem is to identify and reach energy poor people
 - no definition of energy poverty
- Welfare system (public) works on social issues only. There is no time for additional issues
- There is lack of funds for HEAs (payment)
- There is a problem with reaching energy poor people who are not economically poor
- Private sector need to see benefits from tackling energy poverty

Problems and solutions

- Public bodies have the best knowledge about situation of citizens
- Cooperation between public and private sector could bring additional benefits in tackling energy poverty
- Tackling energy poverty could be one of the aims/issues of collective actions (like energy clusters)

ASSIST Project



This project has received funding from the European Union's Horizon 2020 research and innovation programme under grant agreement No 754051.

Energy Poverty in Poland

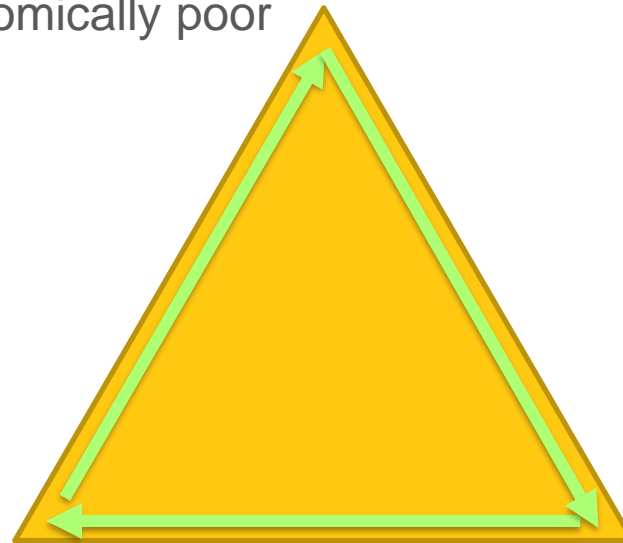
- It is estimated that in Poland the problem of energy poverty currently affects approx. 12% of society – it means 4,6 mln people who live in 1,3 mln households (IBS, 2018)

LOW INCOME

– 60% of energy poor are economically poor

LOW ENERGY EFFICIENCY

– most of people live in old detached houses,
which should be renovated



HIGH COST OF ENERGY

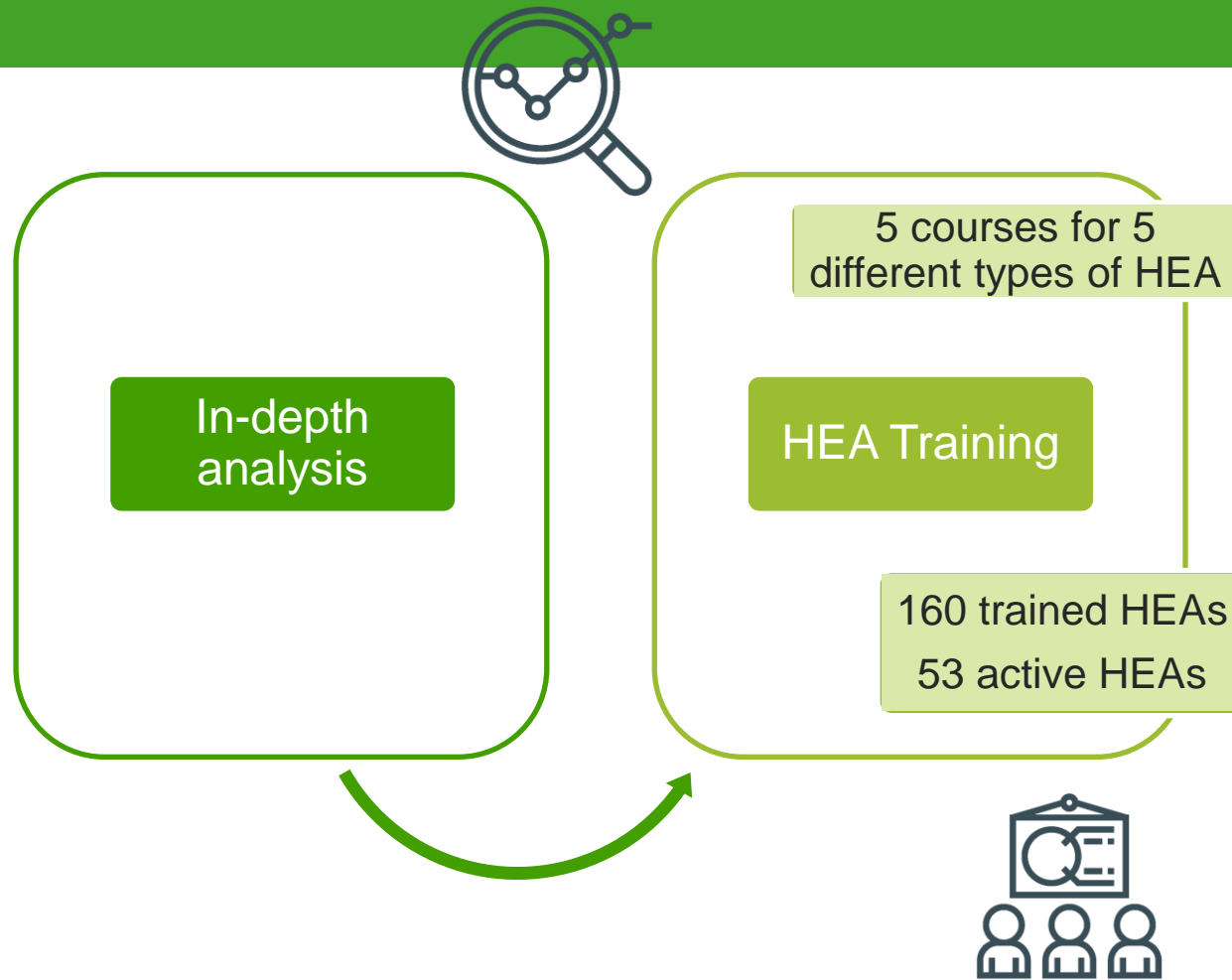
– all of predictions point
to a continued increase
in energy prices

ASSIST in Poland

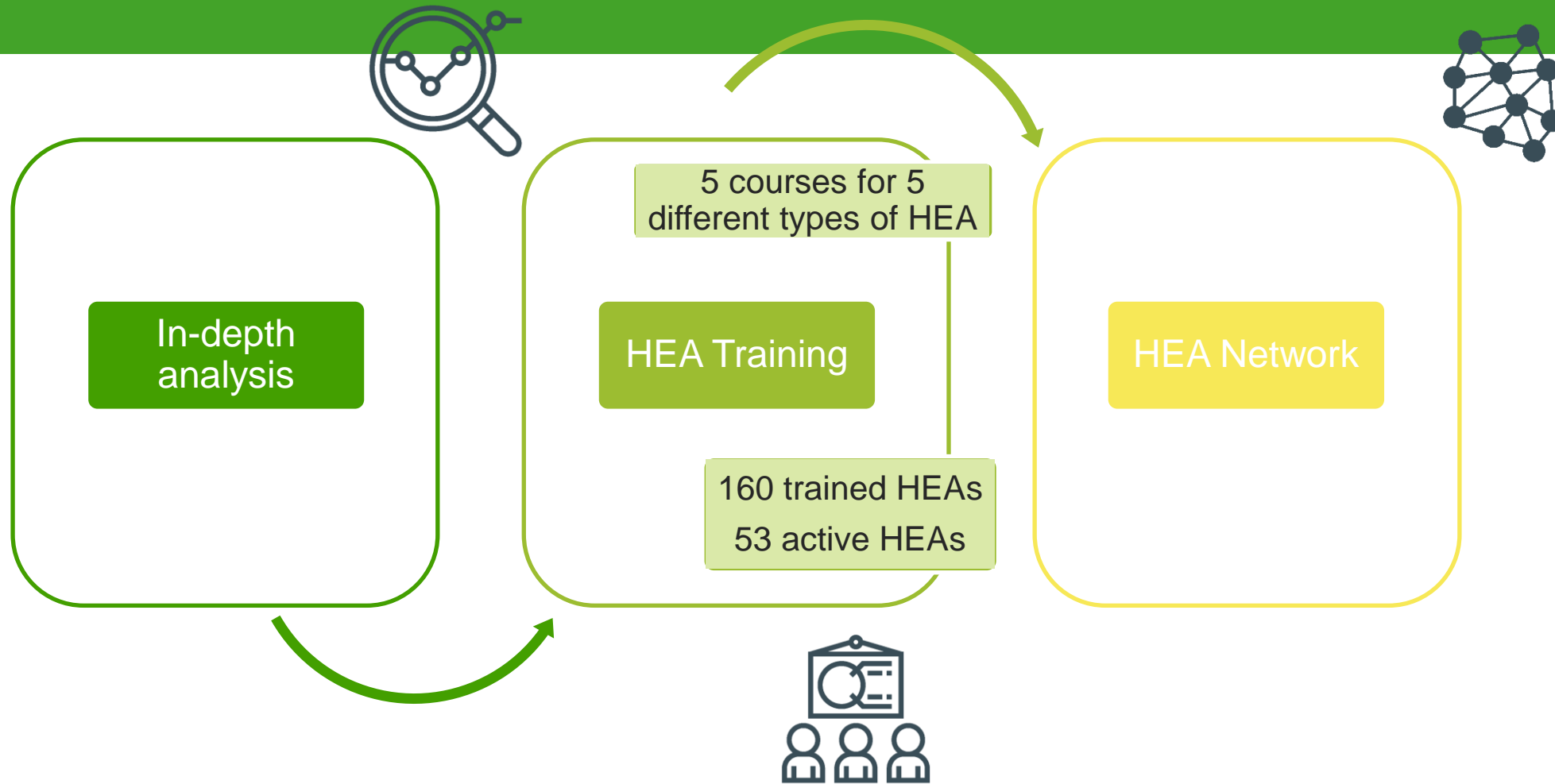


In-depth
analysis

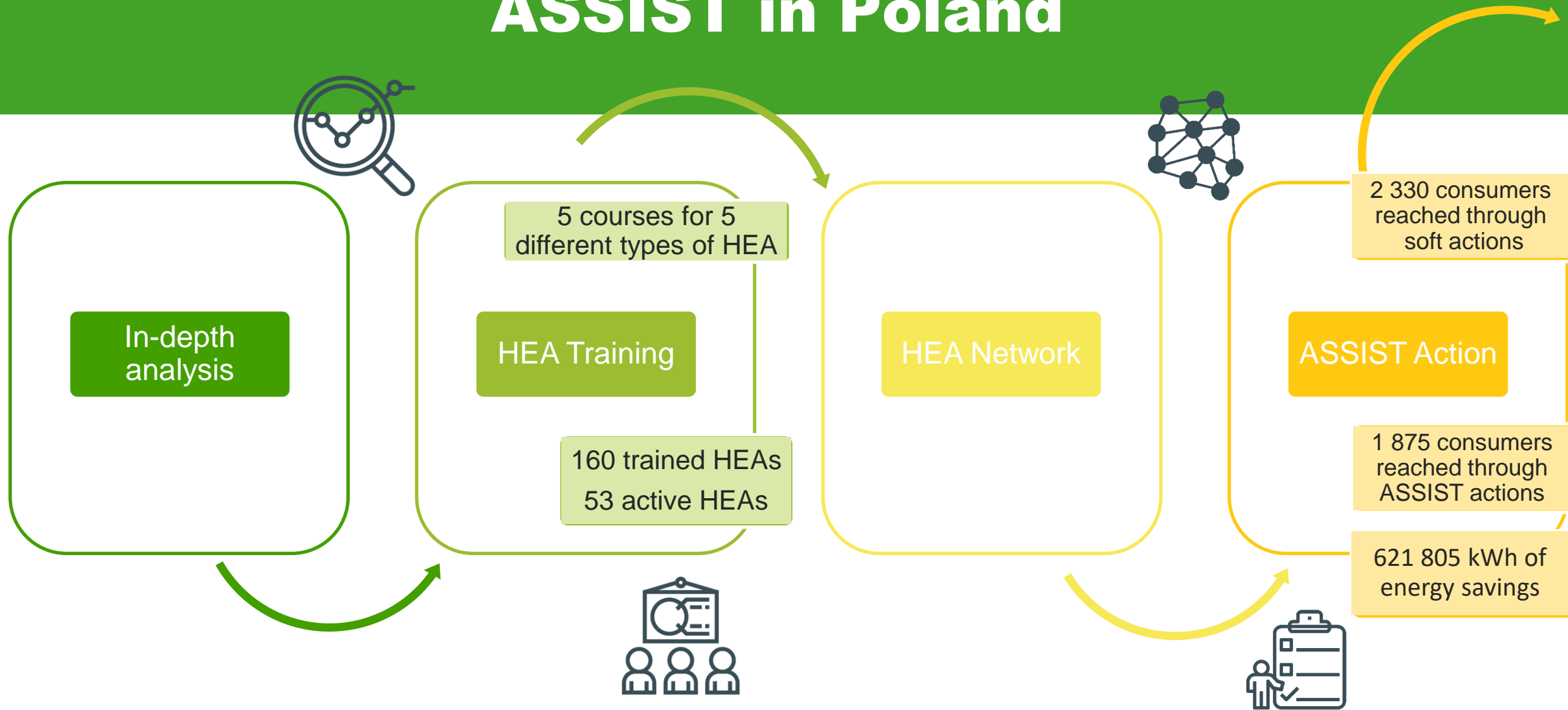
ASSIST in Poland



ASSIST in Poland



ASSIST in Poland



Different ways of reaching vulnerable consumers



 **MAŁOPOLSKA**
W ZDROWEJ ATMOSFERZE 

Projekt LIFE-IP MAŁOPOLSKA / LIFE14 IPE PL 021
realizowany przy wsparciu programu LIFE Unii Europejskiej

Assistance in funds funding



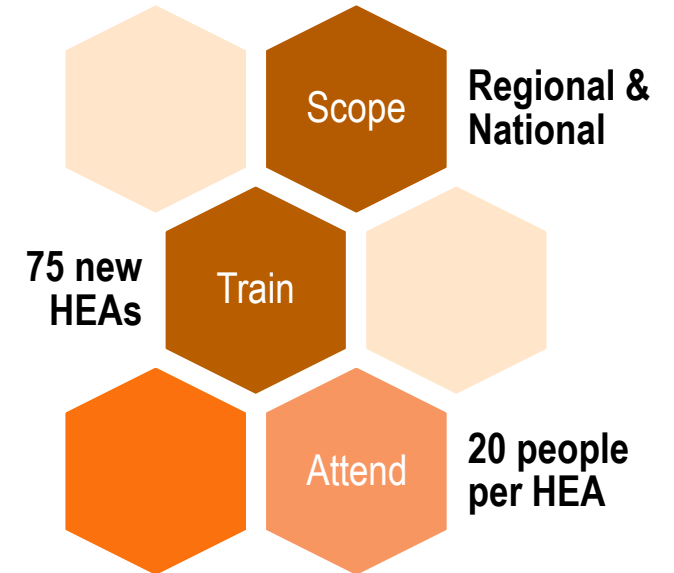
Polish Scalability Plan

OBJECTIVES

- Find another group of advisors – New Eco-Managers.
- Strengthen the position of social workers and improve their knowledge in the energy field.
- Reach the neighbour region to Malopolska, since these areas have very big problems with air pollution and are doing a lot of work on that)
- Double the ASSIST results.

WHAT TO SCALE

- Training and support
- Training schemes made in ASSIST - Tools and resources for the advisors (Moodle platform)
- National network of trained advisors





Funded by:



Partners:



CEEC
Clúster de l'Energia
Eficient de Catalunya



Thank you!
Anna Wierchołowska-Dziedzic



awiercholowska@kape.gov.pl